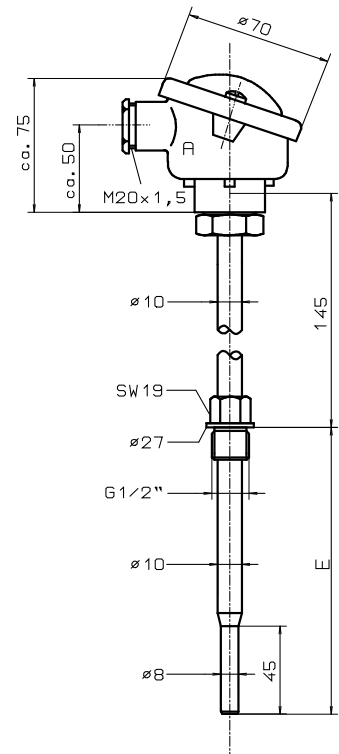


Quick Appealing Screw-in resistance thermometer

Sensor tube 10 x 1, Tip stepped 8 mm Ø

- Measuring insert** 1 x PT 100 / 2 x PT 100, not replaceable
 2-, 3-or 4-wire circuit
 Transmitter installation possible (Sheet 18.10)
- Connection head** Form B of light alloy according to DIN 43729 with
 M 20 x 1.5 cable entry
- Connection diagram** See sheet 19.20
- Operating temperature** Up to 550°C
- Response time
 (Average value)** in water 0,4 m/s : $t_{0,5} \approx 14$ s, $t_{0,9} \approx 44$ s
 in air 1m/s : $t_{0,5} \approx 1,6$ min, $t_{0,9} \approx 4,8$ min


Version Material 1.4541 (V2A) stainless steel X6 CrNiTi 1810

Thermowell Material	E in mm	Weight in kg	Order no. 1 x PT 100	Order no. 2 x PT 100
1.4541 (V2A)	50	1,0	4.57.04.41	4.57.04.42
	100	1,0	4.57.04.51	4.57.04.52
	160	1,0	4.57.04.11	4.57.04.12
	200	1,0	4.57.04.61	4.57.04.62
	250	1,0	4.57.04.21	4.57.04.22
	300	1,0	4.57.04.71	4.57.04.72
	350	1,0	4.57.04.81	4.57.04.82
	400	1,0	4.57.04.31	4.57.04.32
	500	1,0	4.57.04.91	4.57.04.92
Surcharge		3-wire circuit	4.57.00.03	4.57.00.23
		4-wire circuit	4.57.00.04	4.57.00.24

Version Material 1.4571 (V4A) stainless steel X6 CrNiMoTi 1722

Thermowell Material	E in mm	Weight in kg	Order no. 1 x PT 100	Order no. 2 x PT 100
1.4571 (V4A)	50	1,0	4.57.20.41	4.57.20.42
	100	1,0	4.57.20.51	4.57.20.52
	160	1,0	4.57.20.11	4.57.20.12
	200	1,0	4.57.20.61	4.57.20.62
	250	1,0	4.57.20.21	4.57.20.22
	300	1,0	4.57.20.71	4.57.20.72
	350	1,0	4.57.20.81	4.57.20.82
	400	1,0	4.57.20.31	4.57.20.32
	500	1,0	4.57.20.91	4.57.20.92
Surcharge		3-wire circuit	4.57.00.03	4.57.00.23
		4-wire circuit	4.57.00.04	4.57.00.24

Version in other installation lengths and materials possible.