

**Screw-in resistance thermometer form B according to DIN 43763**

with neck tube, the sensor tube 11 x 1 mm

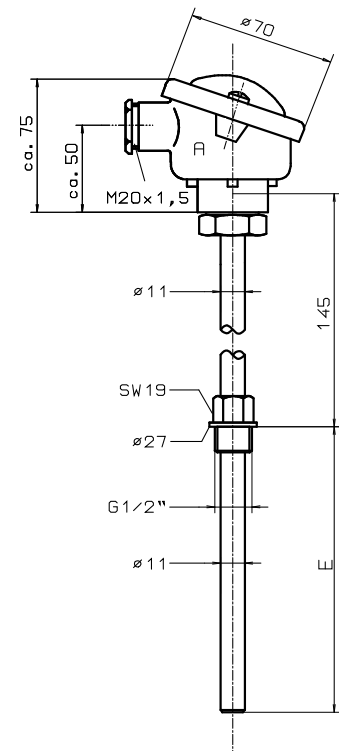
**Measuring insert** 1 x PT 100 / 2 x PT 100, changeable 8 mm Ø  
 2- 3- or 4-wire technology  
 Transmitter installation possible (Sheet 18.10)

**Connection head** Form B of light alloy according to DIN 43729 with  
 M 20 x 1.5 cable entry

**Connection diagram** See sheet 19.20

**Operating temperature** according to chart sheet 1.1

**Response time (Average value)**  
 in Water 0,4 m/s :  $t_{0,5} \approx 30$  s,  $t_{0,9} \approx 90$  s  
 in Air 1 m/s :  $t_{0,5} \approx 2,5$  min,  $t_{0,9} \approx 6,6$  min



**Version** Sensor tube to DIN 43763 Form C, Thermowell 11 x 1 mm, 2-wire technology  
 1.4541 stainless steel (V2A) X6 CrNiTi 1810

Thermowell Material	E in mm	Weight in kg	Measuring insert length	Order no. 1 x PT100	Order no. 2 x PT100	Delivery time
1.4541	100	0,8	255	4.11.04.51	4.11.04.52	All models are available by arrangement
	160	0,9	315	4.11.04.11	4.11.04.12	
	200	0,9	355	4.11.04.61	4.11.04.62	
	250	1,0	405	4.11.04.21	4.11.04.22	
	300	1,0	455	4.11.04.91	4.11.04.62	
	350	1,0	505	4.11.04.71	4.11.04.72	
	400	1,1	555	4.11.04.31	4.11.04.32	
	500	1,2	655	4.11.04.81	4.11.04.82	
Surcharge			3- wire circuit	4.11.00.03	4.11.00.23	
			4- wire circuit	4.11.00.04	4.11.00.24	

**Version** Sensor tube to DIN 43763 Form C, Thermowell 11 x 1 mm, 2-wire technology  
 1.4571 stainless steel (V4A) X6 CrNiMoTi 17122

Thermowell Material	E in mm	Weight in kg	Measuring insert length	Order no. 1x PT100	Order no. 2 x PT100	Delivery time
1.4571	1	0,8	255	4.11.20.51	4.11.20.52	All models are available by arrangement
	1	0,9	314	4.11.20.11	4.11.20.12	
	2	0,9	355	4.11.20.61	4.11.20.62	
	25	1,0	405	4.11.20.21	4.11.20.22	
	30	1,0	455	4.11.20.91	4.11.20.92	
	35	1,0	505	4.11.20.71	4.11.20.72	
	40	1,1	555	4.11.20.31	4.11.20.32	
	50	1,2	655	4.11.20.81	4.11.20.82	
Surcharge			3- wire circuit	4.11.00.03	4.11.00.23	
			4- wire circuit	4.11.00.04	4.11.00.24	

Versions in other nominal lengths and materials possible