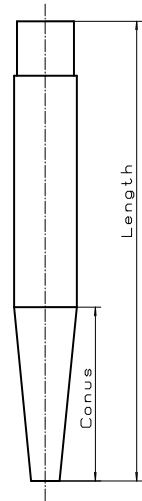


Weld-in thermowells due to DIN 43763 Connection M18 x 5

Load diagrams according to page 1.2 Dimensions according to page 1.11 plus page 11.9

| Dimension (Length/conus) | M-No. 1.7335 13CrMo44 | M-No.1.7380 10CrMo910 | M-No. 1.5415 15Mo3 | M-No. 1.4571 X6CrNiMoTi17122 |
|--------------------------------------|--------------------------|--------------------------|-----------------------|---------------------------------|
| D1 (140/65) | 8.00.02.80 | 8.00.02.87 | 8.00.03.80 | 8.00.02.93 |
| D2 (200/125) | 8.00.02.81 | 8.00.02.88 | 8.00.03.81 | 8.00.02.94 |
| D3 (200/125) | 8.00.02.82 | 8.00.02.89 | 8.00.03.82 | 8.00.02.95 |
| D4 (200/65) | 8.00.02.83 | 8.00.02.90 | 8.00.03.83 | 8.00.02.96 |
| D5 (260/125) | 8.00.02.84 | 8.00.02.91 | 8.00.03.84 | 8.00.02.97 |
| D6 (225/125) | 8.00.02.85 | 8.00.02.92 | 8.00.03.85 | 8.00.02.98 |
| Acceptance 3.1a Certification | | 1.00.06.00 | | |
| Sealing plugs + CU-seal | | Order no. | | |
| For all D-bushing M 18 x 1,5 | | 8.00.02.00 | | |


D s Protective sleeve similar DIN

Allowable operating pressure according to DIN 43763 connection M14x1,5

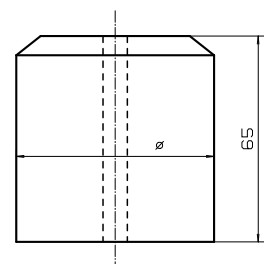
Dimensions see page 11.10

| Dimension (Length/conus) | M-No. 1.7335 13CrMo44 | M-No.1.7380 10CrMo910 | M-No. 1.5415 15Mo3 | M-No. 1.4571 X6CrNiMoTi17122 |
|--------------------------------------|--------------------------|--------------------------|-----------------------|---------------------------------|
| D0s (115/40) | 8.00.20.01 | 8.00.20.05 | 8.00.20.09 | 8.00.20.13 |
| D1s* (140/65) | 8.00.20.02 | 8.00.20.06 | 8.00.20.10 | 8.00.20.14 |
| D2s (200/125) | 8.00.20.03 | 8.00.20.07 | 8.00.20.11 | 8.00.20.15 |
| D4s** (200/65) | 8.00.20.04 | 8.00.20.08 | 8.00.20.12 | 8.00.20.16 |
| Acceptance 3.1a Certification | | | | |
| Sealing plugs + CU-seal | | Order No. | | |
| For all Ds-bushing M 14 x 1,5 | | 8.00.20.00 | | |

*old designation D4sDIN, ** old designation D4sla

Manufacture of special sleeves according to drawing possible
Welded sleeves for Thermowells

| Dimension (Ø) | M-No. 1.7335 13CrMo44 | M-No. 1.7380 10CrMo910 | M-No. 1.5415 15Mo3 | M-No. 1.4571 X6CrNiMoTi17122 |
|--------------------|--------------------------|---------------------------|-----------------------|---------------------------------|
| 50 | 8.00.02.73 | — | 8.00.02.74 | — |
| 65 | — | — | 8.00.02.78 | — |


Laser marking

Labeling of the device with your company logo and data possible

| | Order No. |
|--|------------------|
| Creation of your company logo (Unique price) | T&M basis |
| Price per laser marking | 9.10.10.01 |

