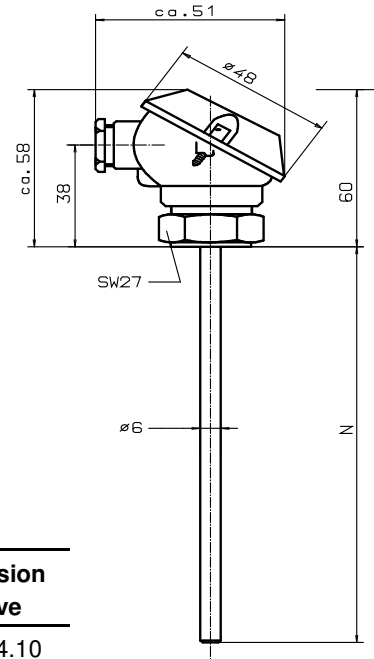


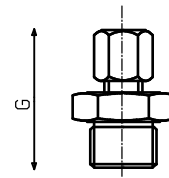
**RTD with small connection head, Fitting slidable**

Sensor fix installed

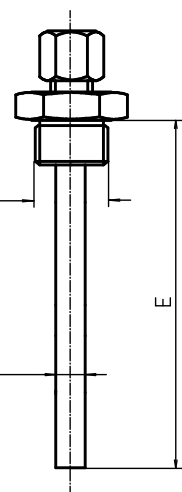
<b>Element</b>	1 x PT 100 / 2 x PT 100, not exchangeable Other sensors possible	
<b>Connection-head</b>	Form MA(J) of Aluminium light alloy with M16x1,5 Cable-screw	
<b>Working-temperature</b>	-40 / + 400 °C Other temperature range possible	
<b>Version</b>	Sensor-Pipe Ø6mm	
<b>Reaction-time</b>	in Water 0,4 m/s	: t <sub>0,5</sub> ≈ 10 s, t <sub>0,9</sub> ≈ 26 s
	in Air 1m/s	: t <sub>0,5</sub> ≈ 0,8 min, t <sub>0,9</sub> ≈ 2,5 min


**Execution With sliding screw**

Thermowell Material	Fitting	N in mm	Order-No. 1 x PT 100	Order-No. 2 x PT100	Immersion sleeve
1.4541 SS(V2A)	G3/4"	50	4.94.04.11	4.94.04.12	4.94.04.10
	G1/2"	50	4.94.04.21	4.94.04.22	4.94.04.20
	G3/4"	100	4.94.04.31	4.94.04.32	4.94.04.30
	G1/2"	100	4.94.04.41	4.94.04.42	4.94.04.40
	G3/4"	150	4.94.04.51	4.94.04.52	4.94.04.50
	G1/2"	150	4.94.04.61	4.94.04.62	4.94.04.60
	G3/4"	200	4.94.04.71	4.94.04.72	4.94.04.70
	G1/2"	200	4.94.04.81	4.94.04.82	4.94.04.80
Additional price for 50 mm nominal length			4.95.04.10	4.94.04.01	4.94.04.02


**Execution With sliding screw**

Thermowell Material	N in mm	Order-No. 1 x PT 100	Order-No. 2 x PT100	Immersion sleeve	Del.Time
1.4571 SS(V4A)	50	4.95.20.51	4.95.20.52	4.95.20.05	Short term, by appointment
	100	4.95.20.61	4.95.20.62	4.95.20.06	
	150	4.95.20.71	4.95.20.72	4.95.20.07	
	200	4.95.20.81	4.95.20.82	4.95.20.08	
Additional price for 50 mm nominal length		4.95.20.10	4.95.20.20		


**Sliding screw mach tot he sensor tube, 6 mm Ø**

Sliding screw	Galvanized steel		Stainless Steel 1.4541	
		from stock		from stock
M 10 x 1 Zyl.	0.70.12.00	x	8.04.04.40	x
1/8" NPT	0.55.12.00	x	8.05.05.30	x
G 1/8"	0.56.12.00	x	8.02.04.40	x
G 1/4"	0.57.12.00	x	8.01.04.40	x
G 1/2"	0.58.12.00	x	8.03.04.40	x
G 3/4"	0.59.12.00	x	8.06.04.10	x
G 1"	0.61.12.00	x	8.07.04.10	x
Spherical screw joints movable VA			8.91.04.30	x
Spring loaded movable screw G1/2" VA			8.90.04.10	x
Spring loaded movable screw M 20 VA			8.90.04.40	x

More Screws (system connection) see data sheet 18.5 , 18.6 und 18.7