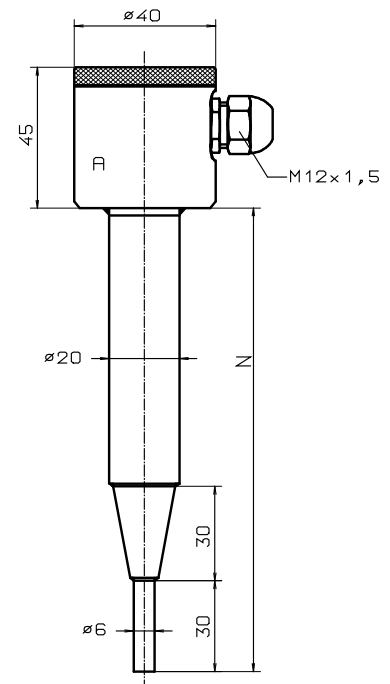


**Cutter resistance thermometer  
 for food use**

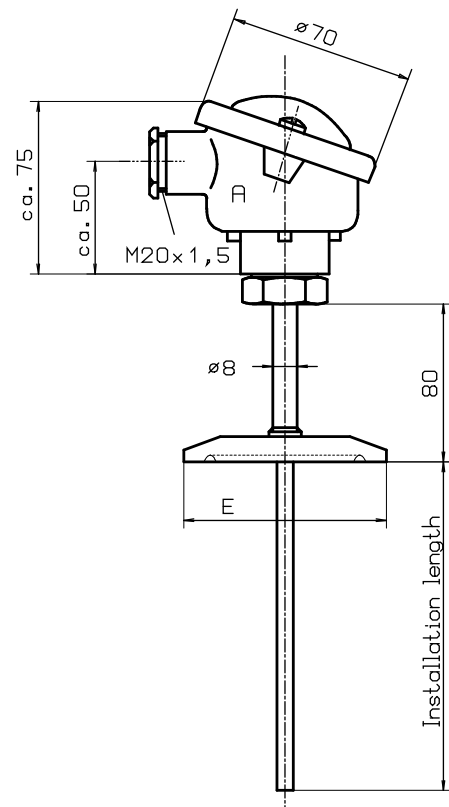
<b>Measuring insert</b>	1 x PT 100 / 2 x PT 100 permanently installed
<b>Connection head</b>	Form VA stainless steel 1.4541
<b>Connection diagram</b>	See sheet 19.20
<b>Thermowell</b>	V4A stainless steel material 1.4571



Version				
N in mm	Order no. 1 x PT100	Order no. 2 x PT100	Delivery Time	
100	4.44.12.11	4.44.12.12	All models are available by arrangement	
150	4.44.12.21	4.44.12.32		
200	4.44.12.31	4.44.12.42		
250	4.44.12.41	4.44.12.52		
300	4.44.12.51	4.44.12.62		
400	4.44.12.61	4.44.12.72		
500	4.44.12.71	4.44.12.82		
<b>Additional price</b>				
50 mm N	4.44.12.05	4.44.12.06		
3-wire circuit	4.44.12.13	4.44.12.23		
4-wire circuit	4.44.12.14	4.44.12.24		

**Resistance thermometer  
 with Tri-Clamp flange**

<b>Measuring insert</b>	1 x PT 100 / 2 x PT 100 permanently installed
<b>Connection head</b>	Form B of light alloy according to DIN 43729 with cable gland M20x1.5
<b>Connection diagram</b>	See sheet 19.20
<b>Thermowell</b>	V4A stainless steel material 1.4571



Version				
E 100 mm	Order no. 1 x PT100	Order no. 2 x PT100	Delivery Time	
<b>Flange</b>			All models are available by arrangement	
E Ø in mm				
25,3	4.45.12.01	4.45.12.07		
34	4.45.12.02	4.45.12.08		
50,5	4.45.12.03	4.45.12.09		
64	4.45.12.04	4.45.12.10		
<b>Additional price</b>				
50mm E	4.45.12.05	4.45.12.06		
3-wire circuit	4.45.12.13	4.45.12.23		
4-wire circuit	4.45.12.14	4.45.12.24		

**Special design possible**