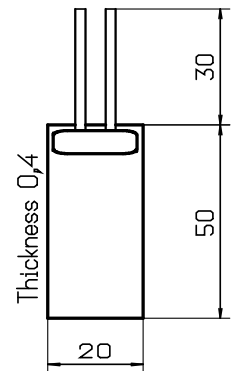
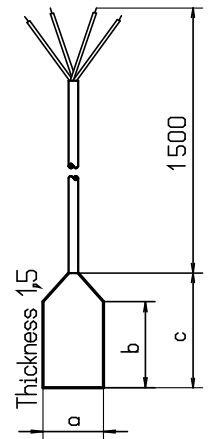


**Surface resistance thermometer**

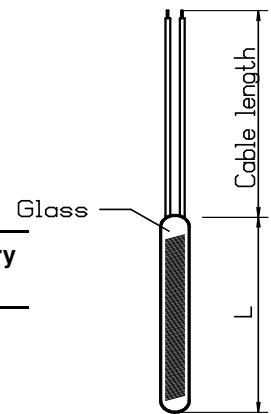
- Measuring insert** 1 x PT100 DIN 43760
- Connection** 4-wire connection lines  
embedded in silicone film or Kapton
- Fixing** Sticking to the surface  
In curved surfaces so attached that the longitudinal axis is perpendicular to the generatrix of the cylinder
- Bending radius** greater than or equal 25 mm



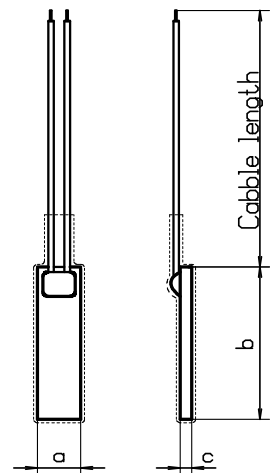
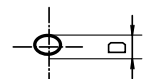
Version	Connection cable	a x b x c in mm	Order no. 1 x PT 100	Delivery Time
<b>Silicon</b> (max.180°C)	Teflon insulated (yellow - red/ PT 100/ white-blue) 1.5 m long with free ends	10 x 18 x 23 Thickness 1,5mm	4.46.00.11	<b>Off the shelf</b> Subject to prior sale
<b>Kapton</b> (max.200°C)	nickel-plated copper 30 mm long	20 x 50 Thickness	4.46.00.31	

**Measuring resistances with hard-wired cable**

- Measuring resistor** Glass resistor 1 x PT 100 Ohm DIN 43760  
Ceramic chip 1 x PT 100 Ohm DIN 43760
- Measuring temperature** Silicone cable up to 180 ° C Teflon lead to 260 ° C
- Version** Measuring resistor and line approach with Teflon shrink tube isolated
- Derivation** 1m discontinued long terminal ends  
Twisted wire as single lines or by special order at no extra cost



Resistance glass with silicone cable		Resistance glass with Teflon cable		Delivery Time
Dimensions D x L in mm	Order no. 1 x PT 100	Dimensions D x L in mm	Order no. 1 x PT 100	
2,5 x 15	4.43.00.31	2,5 x 15	4.43.00.71	<b>Off the shelf</b> Subject to prior sale
4,0 x 30	4.43.00.11	4,0 x 30	4.43.00.51	
6,0 x 50	4.43.00.21	6,0 x 50	4.43.00.61	
a x b x c	Ceramic-Chip	a x b x c	Ceramic-Chip	
2 x 10 x 1,2	4.43.10.11	2 x 10 x 1,2	4.43.10.41	
2 x 4 x 1,2	4.43.10.21	2 x 4 x 1,2	4.43.10.51	
2 x 2 x 1,2	4.43.10.31	2 x 2 x 1,2	4.43.10.61	
<b>1 m cable length</b>	4.43.00.01	<b>1 m cable length</b>	4.43.00.02	


**Surcharge for measuring resistances ( 1xPT100 ) with reduced tolerance**

Version	Tolerance class	Order no.
	1/2 DIN ( Class A )	4.43.12.00
	1/3 DIN	4.43.13.00
	1/5 DIN	4.43.15.00
	1/10 DIN	4.43.10.00